

ETRAGE PUBLISHER FOR WINDCHILL (PSW)

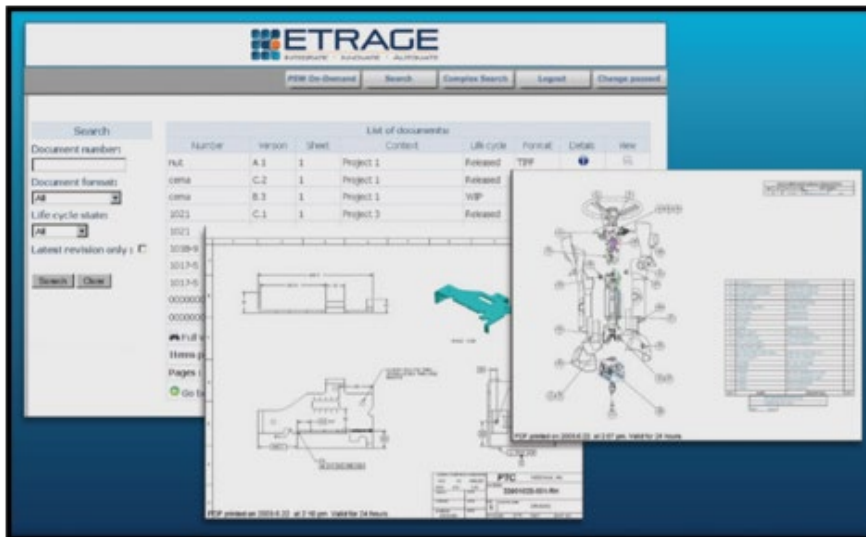
OVERVIEW

Modern, advanced PLM systems allow organizations to maintain the information backbone for product development. But sharing that critical data with other systems and key teams can be a challenge.

ETRAGE Publisher allows product and engineering data to be distributed from PLM throughout an organization.

KEY FUNCTIONALITY

- Automated Monitoring of Windchill for Lifecycle, Revision and Check-in changes
- Additional Batch and On-Demand operating modes
- Filtering on Windchill attributes and file name
- Dynamic Watermarking of PDF files with time & date stamps, attributes, parameters and text
- Notes extraction from Creo Drawings.
- Automatic upload of PDFs to Windchill and SharePoint Server 2019
- Export native drawing, diagram, part and assembly files
- Export native drawing, diagram, part and assembly files to archive format
- Extract metadata and mass properties for downstream applications
- Publish to 3rd party systems like ERP, MRP, CRM, other



**EASY TO USE, STANDARD
WINDOWS INTERFACE**

PUBLISHER KEY FEATURES

CAD & DOCUMENT PLATFORMS:

- SolidWorks®
- PTC® Creo® Parametric®
- PTC® Creo® Schematics®
- CATIA®
- NX®
- AutoCAD®
- Inventor®
- TransMagic
- AutoVue
- MS Word
- MS Excel
- MS PowerPoint
- MS VISIO files

PUBLISHED 2D FILE FORMATS:

- PDF
- PDF Portfolio
- DWG
- DXF
- STEP
- IGES
- HPGL
- TIFF
- BMP
- JPG
- EPS
- TXT

INTEGRATIONS:

- PTC Windchill
- PTC Windchill Projectlink
- PTC Intralink
- PDM Essentials
- SharePoint
- TransMagic
- Theorem Solutions

PUBLISHED 3D FILE FORMATS:

- STEP
- IGES
- Parasolids
- STL
- 3D PDF
- JT
- PVZ (Creo View)
- VRML
- 3DVIA
- PTC ShrinkWrap